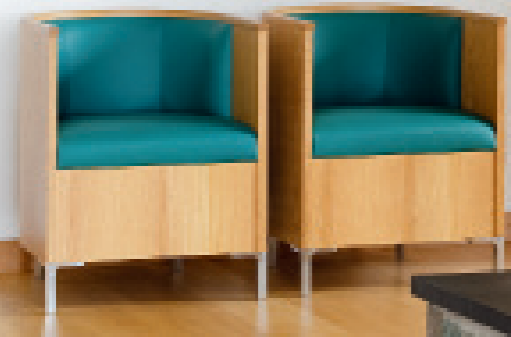


ARTFUL BLEND

PARTIES AND PAINTINGS WERE KERSTIN AND MATS JOHANSSON'S PRIORITIES WHEN THEY BUILT A CONTEMPORARY LAKESIDE HOME

FEATURE MAGGIE COLVIN PHOTOGRAPHY SPIKE POWELL



DINING ROOM

A roaring fire warms up guests as they take in the views of the lake outside. Chaplins stocks a range of designer **tub chairs**; try the Novocento small by Antonio Citterio, £1,380. Habitat's Daborn **sofa**, £650, is available in similar raspberry-pink fabric

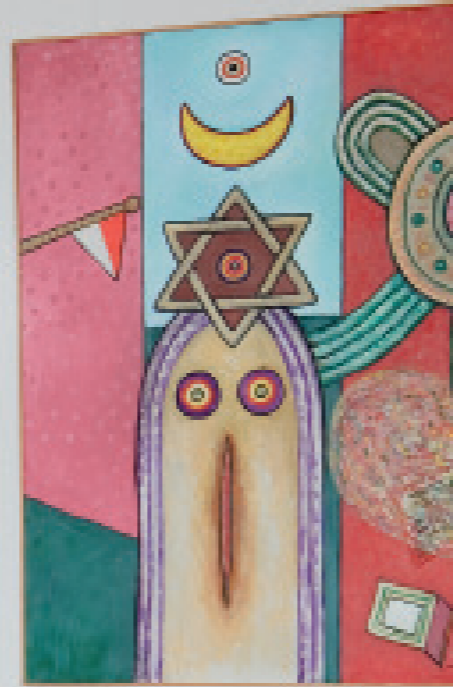
HOME TRUTHS

- ✿ **THE OWNERS** Kerstin Johansson, a teacher, and her husband Mats, who is a businessman
- ✿ **THEIR HOME** Timber-framed new-build
- ✿ **LOCATION** Southern Sweden
- ✿ **ROOMS** Sitting/dining room, kitchen/breakfast room, family room, library/office, cloakroom, four bedrooms, four bathrooms
- ✿ **BUILT** 2000
- ✿ **PREVIOUS PROPERTY** 'We moved here from a farmhouse nearby,' says Kerstin.



INSPIRATION

'If you collect art, as we do, building a new home enables you to specify the exact wall space on which to hang each piece – so in a way, the paintings came first and then we constructed the house around them'



For most of their married life, Swedish couple Kerstin and Mats Johansson have enjoyed the luxury of owning two homes. The couple had a townhouse, from where they could easily commute to work, while the other property was a lakeside summerhouse, a perfect spot for them to retire to at weekends. 'We loved being in

the summerhouse, but as I'd inherited it from my parents, the building was rapidly beginning to show its age,' says Kerstin.

Dating back to the 1900s, the wooden-framed house was sited in an enviable position, being right on the shoreline. However, this exposed location made the place particularly vulnerable to the sometimes harsh Scandinavian weather. 'The window frames and doors had almost rotted away,' Kerstin says.

Realising they would have their hands full maintaining both homes as they got older, Kerstin and Mats took the decision to sell the townhouse, have the summerhouse demolished and build a new property in its place. Mats would then work from home, while Kerstin made the short drive back to town each morning.

Determined to make the most of the ample plot, the Johanssons drew up a list of requirements. 'We have four children, each with families of their own, so plenty of guest accommodation was crucial,' explains Kerstin. 'In addition, Mats and I love to entertain, so a layout conducive for parties ▶



BREAKFAST AREA

This part of the kitchen offers views across both the living zone and the veranda outside. The Salcombe Trading Company sells Scandinavian dining furniture; its Skagerak Ballare table, £1,900, and matching chairs, £439 each, would suit this setting

KITCHEN

The stained-oak cabinetry was chosen for its high quality and plentiful cupboard space.

Friellen kitchen with Corian worktops, from £26,000 supplied and installed, Sola Kitchens. Rug, £99, Ikea



SITTING ROOM

In tune with the property's lakeside location, this scheme has a fresh, nautical look. Graham & Green's Windsor collection, £1,850 for a two-seater sofa, provides equally plush seating. Black metal candlesticks, £150 each, Sola Kitchens Accessory Shop

**MASTER BEDROOM**

Bespoke cherrywood wardrobes inspired a choice of off-white walls to contrast with the richness of the timber.

Wardrobes, price on request, Sola Kitchens. Similar **wall colour**, French Stone emulsion, £27.50 for 2.5 litres, Little Greene. Prêt à Vivre is a good source of striped curtain **fabric**; try Rouen Sky, £18 per metre

**BATHROOM**

The Johanssons' grandchildren love to clamber inside this raised spa bath.

Similar **bath tubs**, £2,400, CP Hart. Bespoke **furniture**, price on application, Sola Kitchens

was a must. And finally, but just as importantly, we're avid collectors of modern paintings, so we needed lots of wall space.'

The couple's architect then came up with a radical proposal of his own. Although the design of the house is based along traditional lines, with a series of wooden A-frames at its core, these vary in size to create a series of double-height and triple-height areas. The main reception rooms are also positioned on the building's first floor, so as to maximise views of the lake.

Such attention to detail is also apparent in the property's interior details, where cherrywood doors are designed in Shaker style, and tongue-and-groove panelling clads the ceilings, as well as some of the guest bedrooms. 'Wood instils a sense of warmth, quality and homeliness,' says Mats. 'And in the event of the grandchildren swiping the bedroom walls with their sticky fingers, it's also far easier to clean than white-painted surfaces.'

Kerstin took an equally pragmatic attitude to the decor. 'We ruled out cream sofas and rugs as being somewhat impractical, and opted instead for vibrant colours picked out from our paintings,' she explains. 'We had lots of fun choosing them.'

Indeed, celebrating with the extended family is an almost daily occurrence in the Johansson household. 'I don't think we ever envisaged quite how brilliantly this place would work out,' admits Mats. 'Not even when we saw the architect's plans, which seemed rather radical at first. We're both overjoyed with the results and so are the children. Every week, one of them is on the phone, asking to come down and stay with us.'

Not that Kerstin and Mats mind being on their own, as the couple always have the spectacular lakeside views to enjoy at. 'In winter, you can watch the foxes slipping and sliding across the ice,' says Kerstin. 'Life here is never boring.' 25

**GUEST BEDROOM**

A hint of New England style is clearly in evidence.

Lexington's **American Star** bedspread, £180, is available at The Blueberry Store. Occa-Home stocks a similar Stars and Stripes **cushion**, also by Lexington, £39